

Company: ABC MANUFACTURERS

Job: HELP\_JOB

Date: 4/23/ 15

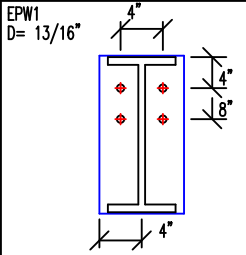
SIZE: W20841

Finish: PRIME

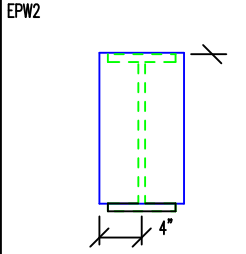
Length: 20'-11 3/8"

Qnt: 2

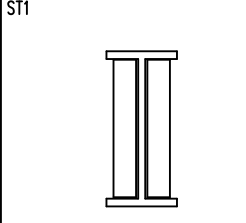
Mark: WF-1



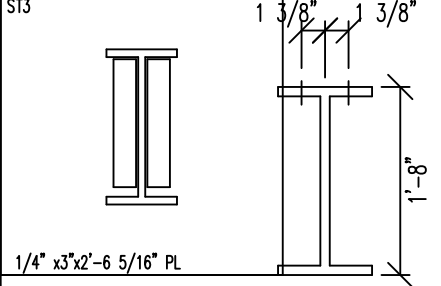
3/8" x 8" x 1'-8" PL



1/4" x 8" x 1'-7 3/4" PL

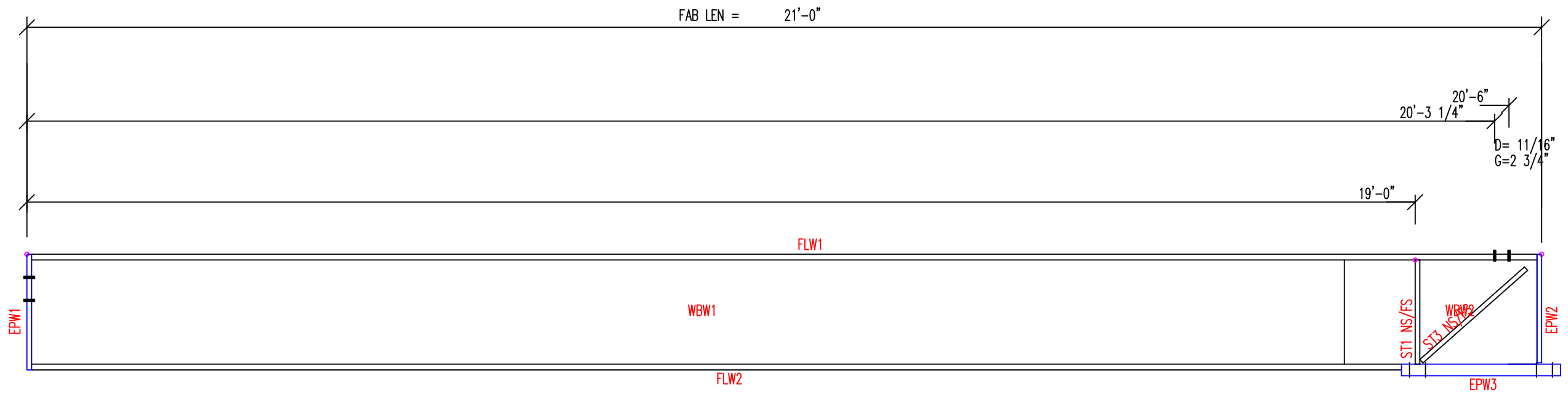


1/4" x 3" x 1'-7 1/2" PL



1/4" x 3" x 2'-6 5/16" PL

VIEW FOR SECTIONS



D = 11/16"  
G = 2 1/4"

MARK	QNT	DESCRIPTION	WEIGHT
WBW1	2	0.135" x 1'-7 1/2" x 17'-11 3/8"	320.4
WBW2	2	0.135" x 1'-7 1/2" x 3'-0"	53.5
FLW1	2	1/4" x 8" x 20'-11 3/8"	285.1
FLW2	2	1/4" x 8" x 18'-8 3/4"	254.9
EPW1	2	3/8" x 8" x 1'-8"	34.0
EPW2	2	1/4" x 8" x 1'-7 3/4"	22.4
EPW3	2	3/8" x 8" x 2'-5 3/4"	50.6
ST1	4	1/4" x 3" x 1'-7 1/2"	16.6
ST3	4	1/4" x 3" x 2'-6 5/16"	25.8
		Weight Sum ..	1063.3

Drawing

WF-1